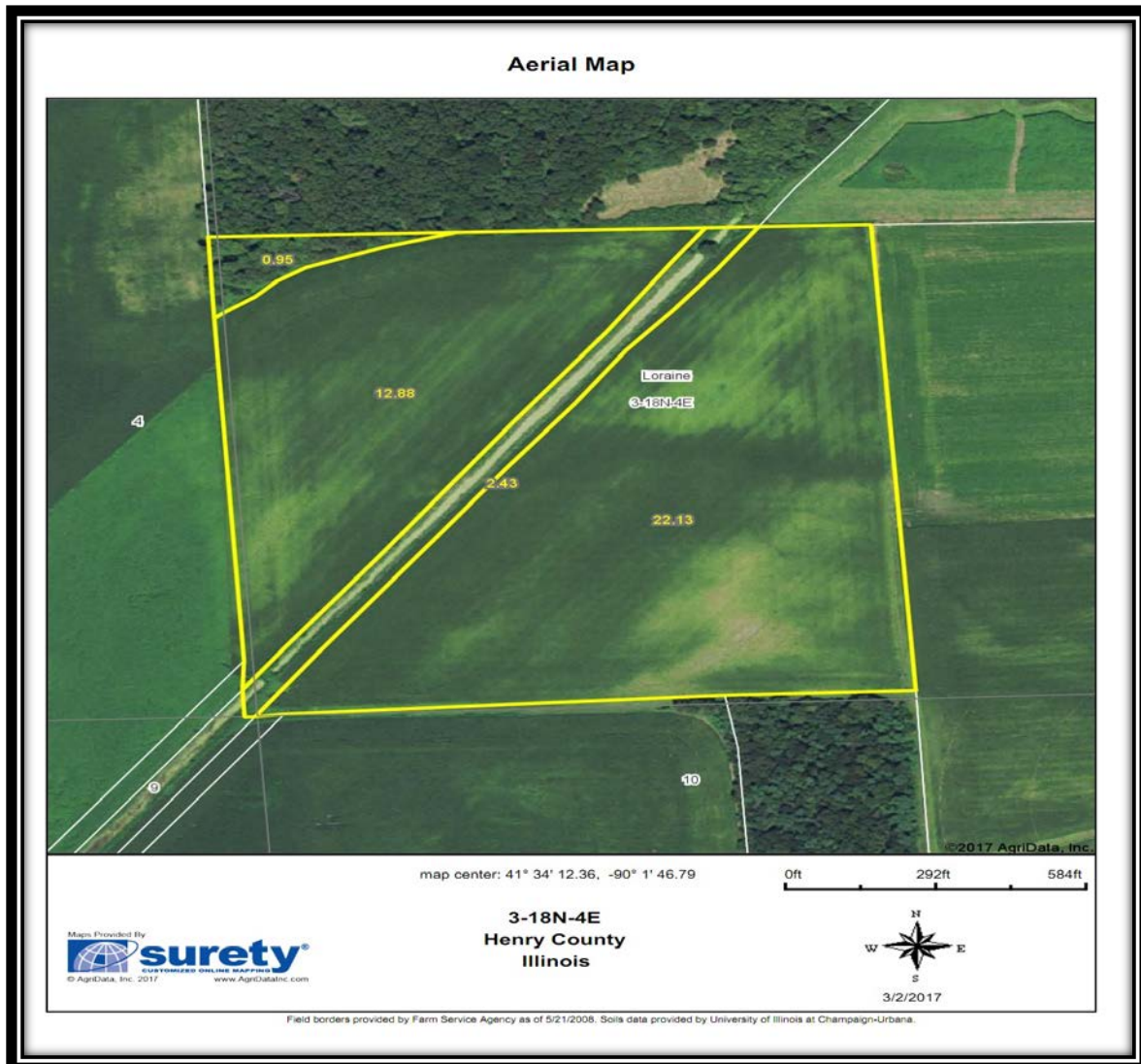




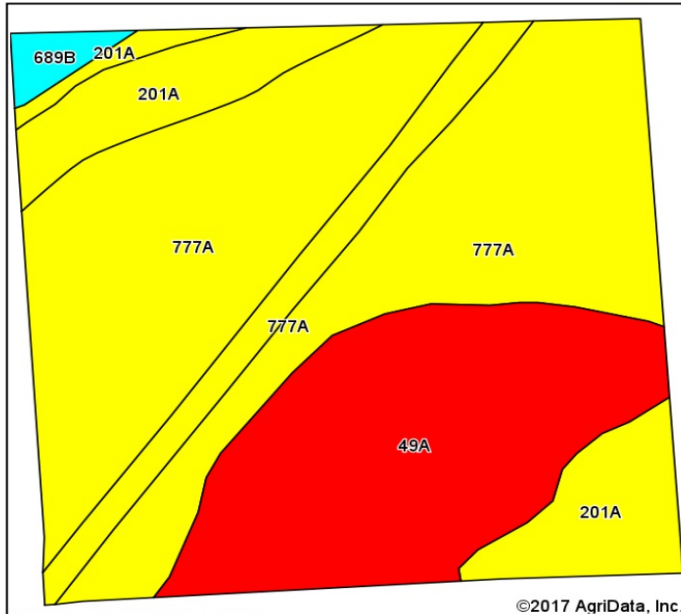
Mabel Brown Estate

38.46 Acres, more or less located in the Southwest Quarter of the Southwest Quarter of Section 3 Loraine Township, Henry County, Illinois

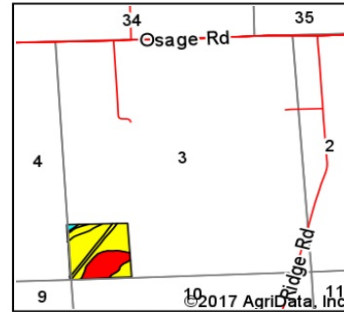
Asking Price: \$6,750.00 per acre
Total Acres: 38.46 Acres
Tillable Acres: 35.01 FSA Acres
Taxes: \$634.26



Soils Map



Soils data provided by USDA and NRCS.



State: **Illinois**
 County: **Henry**
 Location: **3-18N-4E**
 Township: **Loraine**
 Acres: **38.39**
 Date: **3/2/2017**

Maps Provided By



Area Symbol: IL073, Soil Area Version: 12

Code	Soil Description	Acres	Percent of field	Il. State Productivity Index Legend	Subsoil rooting ^a	Corn Bu/A	Soybeans Bu/A	Crop productivity index for optimum management
777A	Adrian muck, 0 to 2 percent slopes	22.33	58.2%		FAV	146	49	110
49A	Watseka loamy fine sand, 0 to 2 percent slopes	10.36	27.0%		FAV	122	41	93
201A	Gilford fine sandy loam, 0 to 2 percent slopes	5.16	13.4%		FAV	148	49	110
**689B	Coloma sand, 1 to 7 percent slopes	0.54	1.4%		FAV	**101	**32	**75
Weighted Average						139.2	46.6	104.9

Area Symbol: IL073, Soil Area Version: 12

Table: Optimum Crop Productivity Ratings for Illinois Soil by K.R. Olson and J.M. Lang, Office of Research, ACES, University of Illinois at Champaign-Urbana. Version: 1/2/2012 Amended Table S2 B811
 Crop yields and productivity indices for optimum management (B811) are maintained at the following NRES web site:

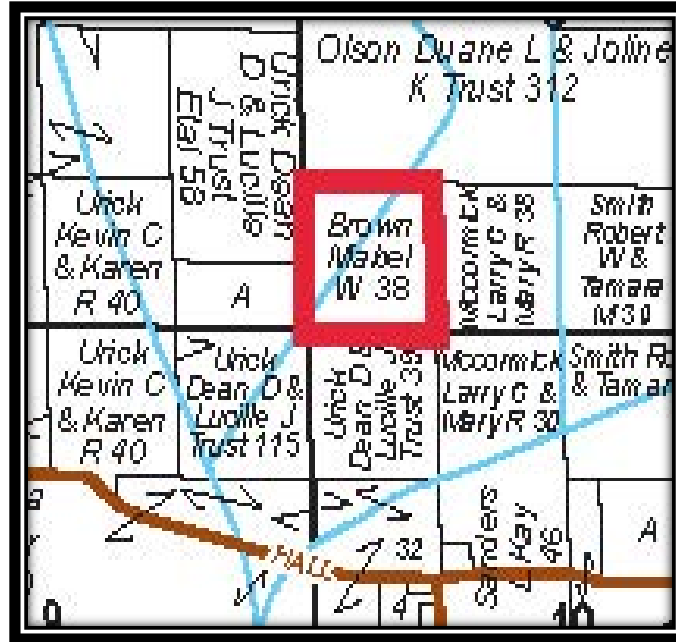
<https://www.ideals.illinois.edu/handle/2142/1027/>

** Indexes adjusted for slope and erosion according to Bulletin 811 Table S3

^a UNF = unfavorable; FAV = favorable

Soils data provided by USDA and NRCS. Soils data provided by University of Illinois at Champaign-Urbana.

*c: Using Capabilities Class Dominant Condition Aggregation Method



Reprinted with permission from 2014 Rockford Map Publishing, INC.