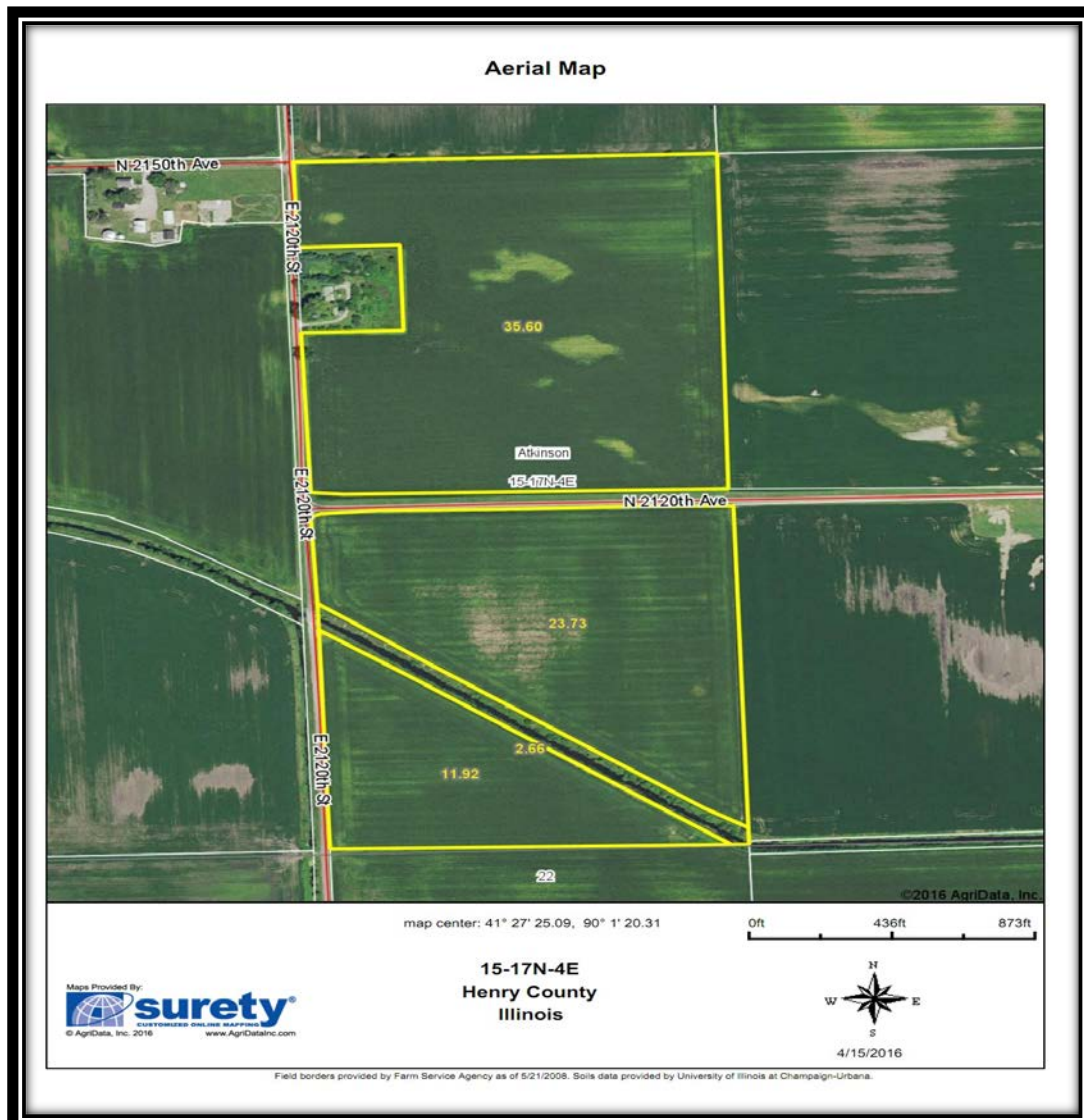




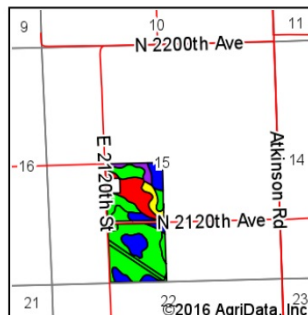
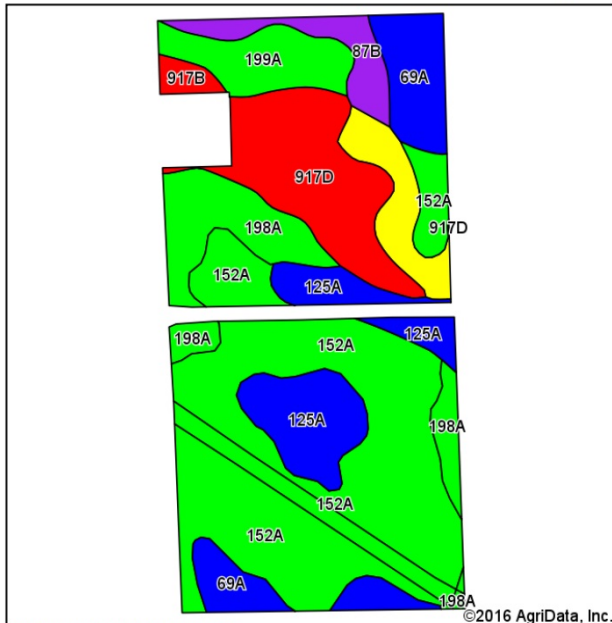
Koch Farm

76.68 Acres, more or less located in the Southwest Quarter of Section 15 Atkinson Township, Henry County, Illinois

Asking Price: \$8,500.00 per acre
 Total Acres: 77.68 Acres
 Tillable Acres: 71.25 FSA Acres
 Taxes: \$2,255.65



Soils Map



State: Illinois
 County: Henry
 Location: 15-17N-4E
 Township: Atkinson
 Acres: 73.91
 Date: 4/15/2016

Maps Provided By:
surety
CUSTOMIZED ONLINE MAPPING
 © AgriData, Inc. 2016 www.AgrIDataInc.com



Soils data provided by USDA and NRCS.

Area Symbol: IL073, Soil Area Version: 11

Code	Soil Description	Acres	Percent of field	Il. State Productivity Index Legend	Subsoil rooting a	Corn Bu/A	Soybeans Bu/A	Crop productivity index for optimum management
152A	Drummer silty clay loam, 0 to 2 percent slopes	31.28	42.3%		FAV	195	63	144
**917D	Oakville-Tell complex, 7 to 15 percent slopes	9.45	12.8%		FAV	**116	**39	**88
125A	Selma loam, 0 to 2 percent slopes	7.65	10.4%		FAV	176	57	129
198A	Elburn silt loam, 0 to 2 percent slopes	7.32	9.9%		FAV	197	61	143
69A	Milford silty clay loam, 0 to 2 percent slopes	6.66	9.0%		FAV	171	57	128
199A	Plano silt loam, 0 to 2 percent slopes	4.35	5.9%		FAV	194	60	142
**565B	Tell silt loam, 2 to 5 percent slopes	3.48	4.7%		FAV	**151	**50	**111
**87B	Dickinson sandy loam, 2 to 5 percent slopes	2.88	3.9%		FAV	**141	**46	**103
**917B	Oakville-Tell complex, 1 to 7 percent slopes	0.84	1.1%		FAV	**124	**42	**94
Weighted Average						175.9	56.9	129.9

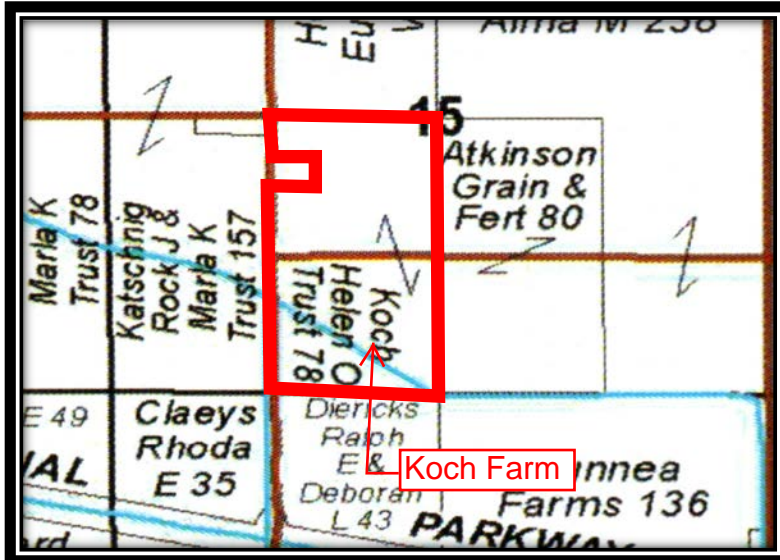
Area Symbol: IL073, Soil Area Version: 11

Table: Optimum Crop Productivity Ratings for Illinois Soil by K.R. Olson and J.M. Lang, Office of Research, ACES, University of Illinois at Champaign-Urbana. Version: 1/2/2012 Amended Table S2 B811
 Crop yields and productivity indices for optimum management (B811) are maintained at the following NRES web site:
<https://www.ideals.illinois.edu/handle/2142/1027/>

** Indexes adjusted for slope and erosion according to Bulletin 811 Table S3
 a UNF = unfavorable; FAV = favorable

*c: Using Capabilities Class Dominant Condition Aggregation Method

Soils data provided by USDA and NRCS. Soils data provided by University of Illinois at Champaign-Urbana.



Reprinted with permission from 2014 Rockford Map Publishing, INC.