



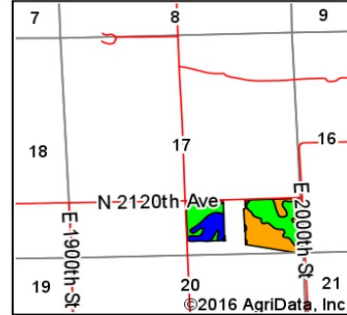
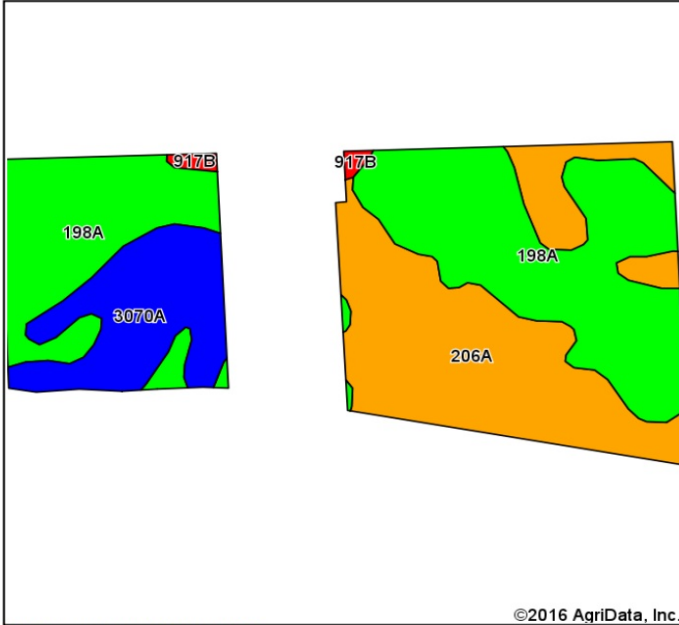
# Koch Farm

56.56 Acres, more or less located in the Southeast Quarter of Section 17 Atkinson Township, Henry County, Illinois

Asking Price: \$8,500.00 per acre  
Total Acres: 56.56 Acres  
Tillable Acres: 53.74 FSA Acres  
Taxes: \$1,754.19



## Soils Map



State: **Illinois**  
 County: **Henry**  
 Location: **17-17N-4E**  
 Township: **Atkinson**  
 Acres: **53.74**  
 Date: **4/15/2016**



Soils data provided by USDA and NRCS.

©2016 AgriData, Inc.

Area Symbol: IL073, Soil Area Version: 11

Code	Soil Description	Acres	Percent of field	Ill. State Productivity Index Legend	Subsoil rooting <sup>a</sup>	Corn Bu/A	Soybeans Bu/A	Crop productivity index for optimum management
198A	Elburn silt loam, 0 to 2 percent slopes	26.72	49.7%		FAV	197	61	143
206A	Thorp silt loam, 0 to 2 percent slopes	18.49	34.4%		FAV	170	55	126
3070A	Beaucoup silty clay loam, 0 to 2 percent slopes, frequently flooded	8.07	15.0%		FAV	176	58	132
**917B	Oakville-Tell complex, 1 to 7 percent slopes	0.46	0.9%		FAV	**124	**42	**94
<b>Weighted Average</b>						<b>183.9</b>	<b>58.3</b>	<b>135.1</b>

Area Symbol: IL073, Soil Area Version: 11

**Table: Optimum Crop Productivity Ratings for Illinois Soil by K.R. Olson and J.M. Lang, Office of Research, ACES, University of Illinois at Champaign-Urbana.** Version: 1/2/2012 Amended Table S2 B811

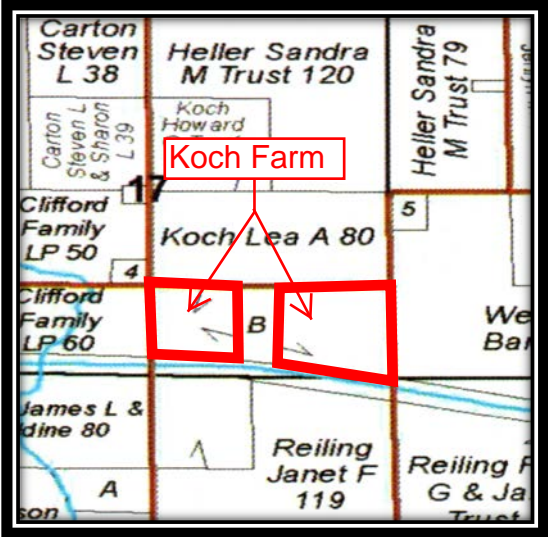
Crop yields and productivity indices for optimum management (B811) are maintained at the following NRES web site:  
<https://www.ideals.illinois.edu/handle/2142/1027/>

\*\* Indexes adjusted for slope and erosion according to Bulletin 811 Table S3

<sup>a</sup> UNF = unfavorable; FAV = favorable

Soils data provided by USDA and NRCS. Soils data provided by University of Illinois at Champaign-Urbana.

\*c: Using Capabilities Class Dominant Condition Aggregation Method



Reprinted with permission from 2014 Rockford Map Publishing, INC.