



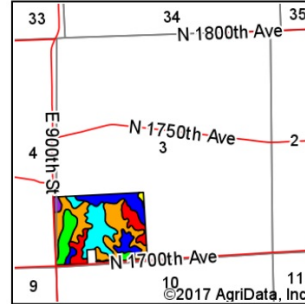
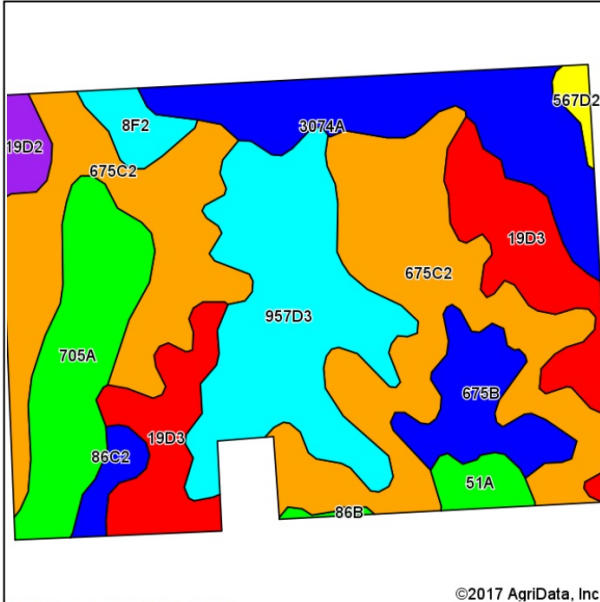
Ostrowski Farm

79.68 Acres, more or less located in the Southwest Quarter of Section 3 Osco Township, Henry County, Illinois

Asking Price: \$6,750.00 per acre
 Total Acres: 79.68 Acres
 Tillable Acres: 62.81 FSA Acres
 Taxes: \$1,099.36



Soils Map



State: Illinois
 County: Henry
 Location: 3-16N-2E
 Township: Osco
 Acres: 79.98
 Date: 4/15/2017



Soils data provided by USDA and NRCS.

©2017 AgriData, Inc.

Area Symbol: IL073, Soil Area Version: 12

Code	Soil Description	Acres	Percent of field	Il. State Productivity Index Legend	Subsoil rooting ^a	Corn Bu/A	Soybeans Bu/A	Crop productivity index for optimum management
**675C2	Greenbush silt loam, 5 to 10 percent slopes, eroded	27.70	34.6%		FAV	**171	**54	**125
**957D3	Elco-Atlas silty clay loams, 10 to 18 percent slopes, severely eroded	13.65	17.1%		UNF	**95	**32	**71
**19D3	Sylvan silty clay loam, 10 to 18 percent slopes, severely eroded	10.45	13.1%		FAV	**122	**40	**90
3074A	Radford silt loam, 0 to 2 percent slopes, frequently flooded	9.50	11.9%		FAV	186	58	136
705A	Buckhart silt loam, 0 to 2 percent slopes	8.05	10.1%		FAV	190	61	142
**675B	Greenbush silt loam, 2 to 5 percent slopes	4.26	5.3%		FAV	**182	**57	**133
**8F2	Hickory silt loam, 18 to 35 percent slopes, eroded	1.55	1.9%		FAV	**80	**27	**61
51A	Muscataine silt loam, 0 to 2 percent slopes	1.42	1.8%		FAV	200	64	147
**19D2	Sylvan silt loam, 10 to 18 percent slopes, eroded	1.39	1.7%		FAV	**134	**44	**99
**86C2	Osco silt loam, 5 to 10 percent slopes, eroded	1.16	1.5%		FAV	**178	**56	**131
**567D2	Elkhart silt loam, 10 to 18 percent slopes, eroded	0.65	0.8%		FAV	**152	**48	**111
**86B	Osco silt loam, 2 to 5 percent slopes	0.20	0.3%		FAV	**189	**59	**140
Weighted Average						154	49.2	113.4

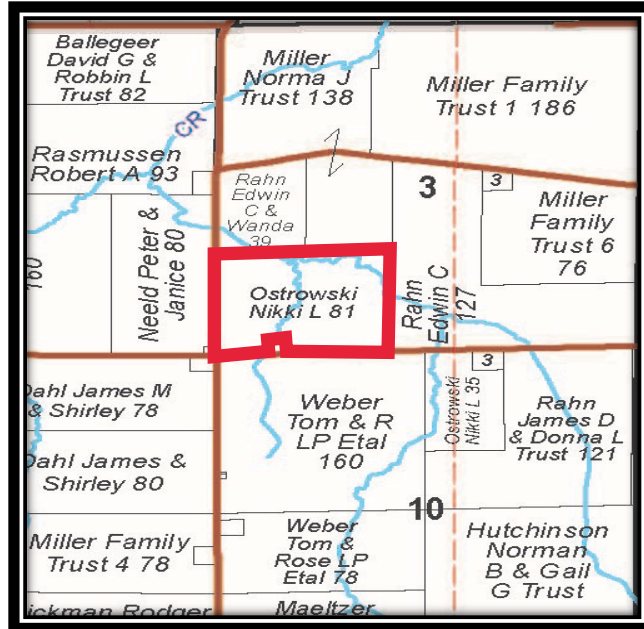
Table: Optimum Crop Productivity Ratings for Illinois Soil by K.R. Olson and J.M. Lang, Office of Research, ACES, University of Illinois at Champaign-Urbana. Version: 1/2/2012 Amended Table S2 B811

Crop yields and productivity indices for optimum management (B811) are maintained at the following NRES web site:
<https://www.ideals.illinois.edu/handle/2142/1027/>

** Indexes adjusted for slope and erosion according to Bulletin 811 Table S3
^a UNF = unfavorable; FAV = favorable

^c: Using Capabilities Class Dominant Condition Aggregation Method

Soils data provided by USDA and NRCS. Soils data provided by University of Illinois at Champaign-Urbana.



Reprinted with permission from 2014 Rockford Map Publishing, INC.